

**Speed Queen**

**ON-PREMISES**

**WASHER-EXTRACTORS**

250 lb. (113 kg) WASHER-EXTRACTOR



**Speed Queen®**

BUILT BETTER TO LAST LONGER

# LET SPEED QUEEN LEAD THE WAY...

As America's largest commercial laundry equipment manufacturer, Speed Queen stands for innovation. As a leader in on-premises laundry technology, our electronically controlled laundry units will provide you with quality, efficiency, and the flexibility of micro-processor controls well into the 21st century. Since 1908 we have been committed to our tradition of quality products, backed by superior customer service.

## *Variable Extract Speeds*

*We designed our 250 lb. models with variable extract speeds to accommodate the different extract speed requirements of various fabrics: low for synthetics, permanent press and blends, mid-range for mattress pads, blankets and spreads, and high for terry and cotton items.*

*These models have a higher G-force during extraction, which lowers the water retention of the fabrics being processed. This helps to reduce*

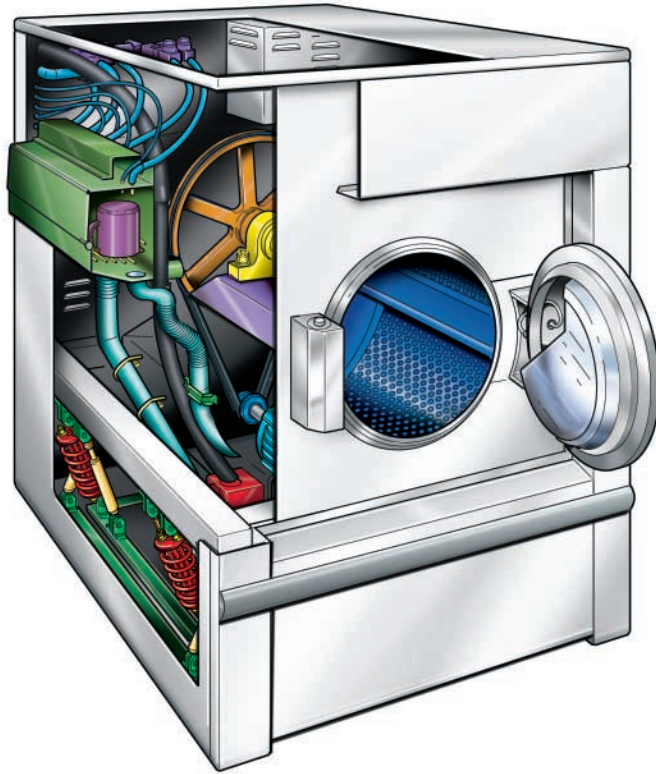
*the gas or electricity used during the drying and finishing process, saving both time and money. Shorter dryer tumbling time also reduces linting and extends linen life. High speed extraction removes a large percentage of moisture from laundry loads and can allow flatwork to be fed through flatwork finishers without prior drying, eliminating preconditioning of items to be ironed, saving energy while increasing production.*

## *Superior Energy Efficiency*

*With the microprocessor you can customize any of the programs to meet the needs of your laundry room operation while saving energy. The programmable steps include: Temperature-controlled fill, thermal cool down, 8 automatic supply selections and available auxiliary heating temperature control from 80°F to 200°F (27°C to 93°C), and 7 variable wash and extract speeds.*



# WASHER-EXTRACTORS

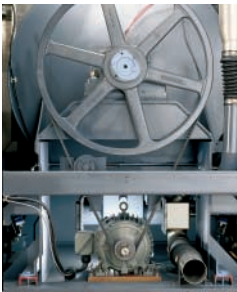


## Tuned Suspension

Extensive engineering efforts have resulted in a tuned suspension system that absorbs even severe out-of-balance load vibrations. Heavy-duty coil springs and carefully matched shock absorbers keep wash loads in balance and aid in controlling movement.

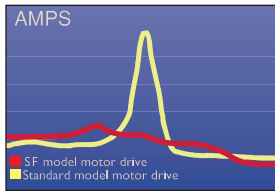
## V-Belt Drive

Our V-belt drive system eliminates transmissions and clutches providing simple, quiet and dependable operation.



## Frequency Drive

Speed Queen washer-extractors are designed to reduce power costs



with the variable frequency drive. Whereas a standard drive requires six times the normal running current to accelerate to extract speed, Speed Queen washer-extractors require a lower inrush current which can dramatically reduce power costs.

## Stainless Steel Construction

Durable 304 stainless steel cabinet front, top, and sides as well as inner and outer tubs won't corrode, chip, crack or pit with normal use, and they're extremely rust resistant. In fact, Speed Queen's washer-extractors will maintain their lustrous appearance for years to come.



## Five Compartment Supply Dispenser

A five compartment automatic flushing supply dispenser system, which adds laundry cleaning products at the correct time is standard equipment. The five flush-down compartments with removable containers and five liquid supply connections provide for maximum flexibility. Also features 8 liquid supply signals.



## Re-Use Options

Extra inlet and drain available.

## Heating Options

Speed Queen offers steam heating to boost or maintain wash temperatures.

## Tilt Options

One- and two-way tilt options available.

## Control Option



Fully programmable electronic control

Speed Queen can bring you a microprocessor controlled laundry system with automatic and programmable operation. The microprocessor captures all of the features you need to make your laundry room operate efficiently. The 250 lb. (113 kg) washer-extractors offer 39 preset programs that can be easily erased or edited to customize your on-premises laundry.

Step-by-step LED instructions provide for simple operation and programming, whether automatic or manual. The microprocessor provides a variety of special features for optimum customer convenience. The features include: cycle advance, variable time signal, external supply signals, error signals, program modification and diagnostic checks for technical service.



Forward and Two-Way Tilt Option

# 3 YEAR WARRANTY

---

At Speed Queen, we're confident that our washer-extractors are built better to last longer and we're offering the following limited warranty to prove it:

**Through three years\***

Any part on the entire machine.

**Through five years\***

The bearings and bearing seal assembly. Frame, cylinder and shaft assembly.

\*Parts only. Labor not included.  
See Speed Queen Warranty Bond for specifics.

# WASHER-EXTRACTOR Specifications

	SF250
Dry Weight Capacity	250 lb (113 kg)
Cylinder Diameter	52" (1321 mm)
Cylinder Depth	32" (813 mm)
Cylinder Volume	39.3 cu. ft. (1114 liters)
Dimensions (Overall Height)	82" (2083 mm)
(Overall Width)	88.1" (2235 mm) w/ tilt 77.06" (1957 mm)
(Overall Depth)	79" (2006 mm) w/ tilt 80.2" (2037 mm) 91" (2311 mm) w/ tilt
Door Bottom to Floor	32.6" (829 mm)
Door Opening Size	28 1/2" (724 mm)
Motor HP	25 HP (18.5 kW)
Gentle Wash Speed	21 rpm/0.325 G's
Wash Speed	31 rpm/0.858 G's
Distribution Speed	54 rpm/2.15 G's
Extract Speed (Medium)	140 rpm/15 G's
(High 1)	340 rpm/87 G's
(High 2)	435 rpm/142 G's
(High 3)	650 rpm/318 G's
Electric Heat	N/A
Drain Diameter	4" (102 mm)
Center Line Drain to Floor	8.6" (218 mm)
Inlet Connections (Water)	1 1/2" (DN40)
(Steam)	1", (DN25) 9.2 BHP
(Air)	1/4", (DN6) 80 psi, 1.7 - 8 bar
<b>Electrical Specifications</b>	
Electrical Specifications Circuit Breaker Requirements and Full Load Amperages (Circuit-Full Load Amps)*	200-240/50-60/3 70-56 200-240/50-60/3 40-28 380-415/50-60/3 40-32
Net Weight	7500 lb (3540 kg) <b>Forward Tilt:</b> 8800 lb (4000 kg) <b>Two-Way Tilt:</b> 9600 lb (4355 kg)
Domestic Shipping Weight	8000 lb (3630 kg) <b>Forward Tilt:</b> 9000 lb (4082 kg) <b>Two-Way Tilt:</b> 9800 lb (4445 kg)
Available Crated Shipping Weight	8500 lb (3860 kg) <b>Forward Tilt:</b> 9300 lb (4227 kg) <b>Two-Way Tilt:</b> 10,100 lb (4581 kg)
Domestic Shipping Dimensions (H x D x W) approx.	87.5" x 84" x 96.25" (2216 x 2134 x 2444 mm)
Crated Shipping Dimensions (H x D x W) approx.	91" x 87" x 99" (2311 x 2210 x 2155 mm)
Agency Approvals	ETL, CE

\*Standard domestic voltage 208-240/60/3. Circuit breaker and amp draw data shown is for standard voltage models. Consult factory for other configurations. Manufacturer strongly recommends using a circuit breaker instead of fuses. Use 3-pole circuit breakers for 3-phase machines. Features and certifications may vary by model. Consult factory for details. Due to continuous product improvements, design and specifications are subject to change without notice. Speed Queen reserves the right to change or discontinue models without notice. The quality management systems at all Alliance Laundry Systems facilities have been awarded ISO 9001 certification. CE approved models available in 50-cycle.

